

## Asking for and Giving Directions



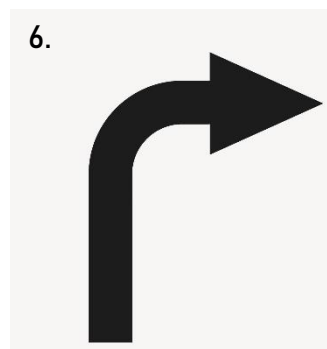
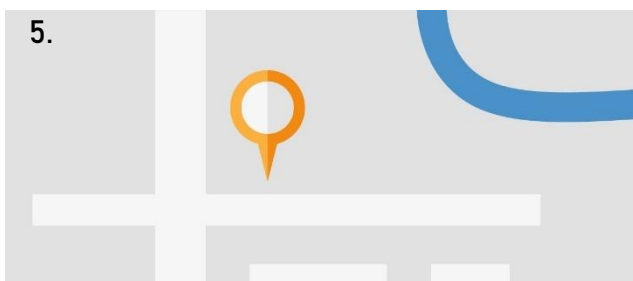
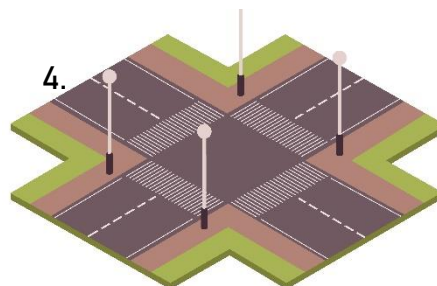
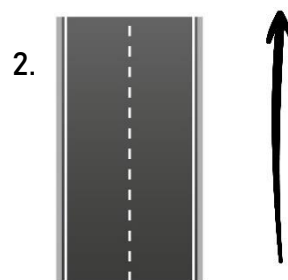
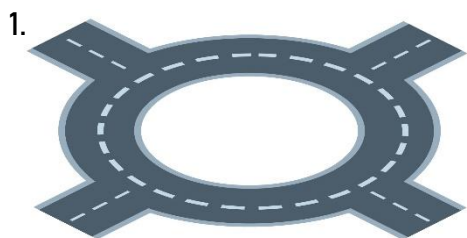
1. Match the words in the box to the pictures below.

intersection *4*  
go past *8*

go straight *2*  
roundabout *1*

turn right *6*  
bridge *3*

on the corner *5*  
cross the street *7*



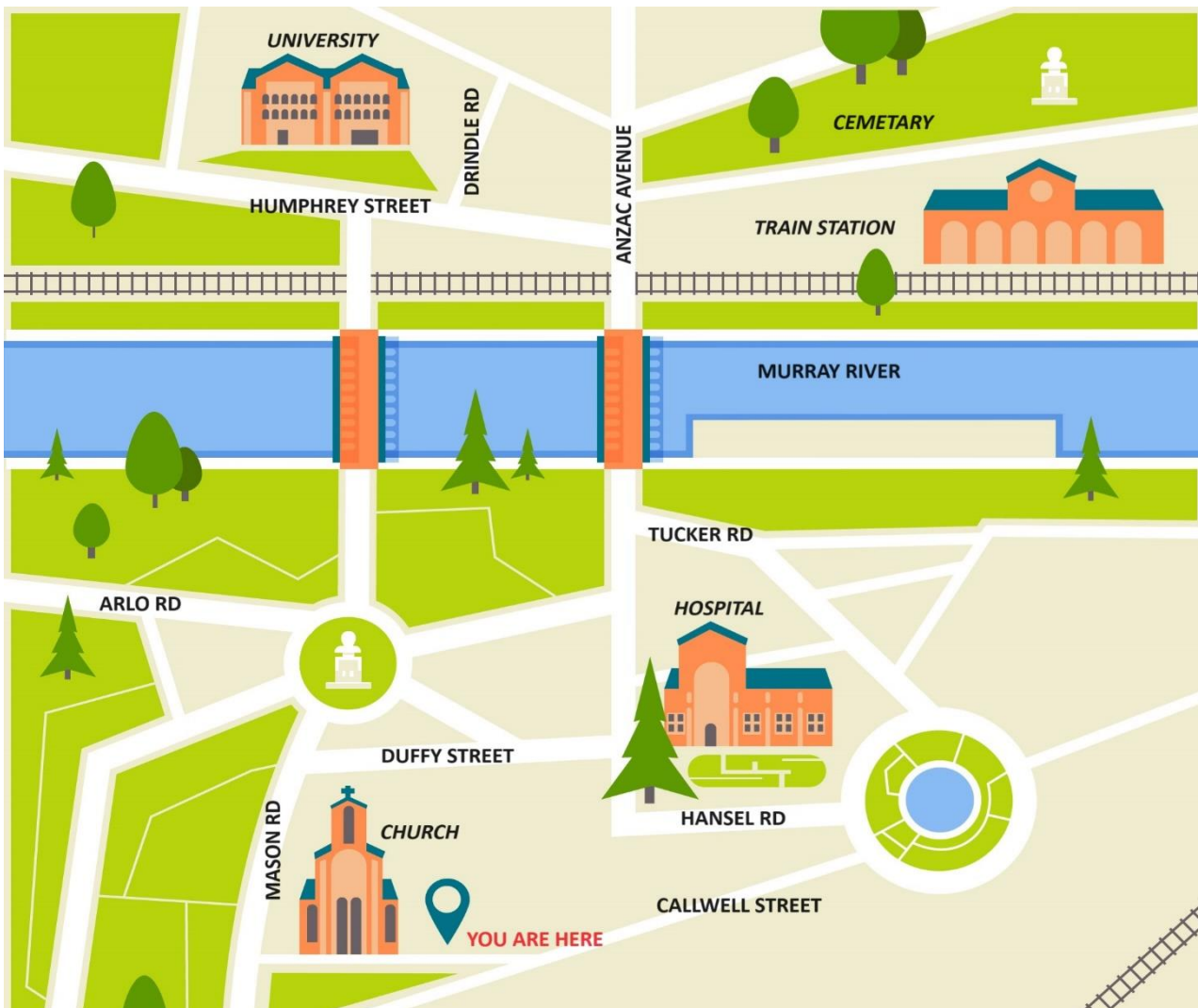
**2. Read the conversation and mark where the bakery is on the map below.**

John: "Excuse me, I'm a little bit lost. Where is Birdy's Bakery?"

Shona: "No problem, I know that bakery. Go *straight* on this road, go *past* the church, and then *turn right* on Mason Road. Go straight at the *roundabout*. Then you want to *cross* the *bridge* and *turn right* at the next *intersection*. Go *past* Drindle Road and the bakery will be at the next *intersection* on your left. It's a great bakery, you should try the donuts!"

John: "Thank you so much!"

*The bakery is on the corner of Humphrey Street and Anzac Avenue*



**3. Pairwork: you are at the church on the map in exercise 2. Ask your partner for directions to these places. Try to use the words from exercise 1 in your directions.**

"Excuse me, I'm lost, where is ....."

- *the university?*
- *the cemetery?*
- *the hospital?*



#### 4. Write directions for the nearest supermarket to your house.

.....

.....

.....

.....

.....

#### Polite Questions with "Could"

We can make questions more polite with the word "could."

Eg. *"Where is the hospital?"* vs *"Could you tell me where the hospital is?"*

Note: if we are asking for information, "could" questions often begin with "Could you tell me....?"



#### 5. Make the questions and statements more polite by making a question with "could."

a) "Open the window."

e.g. *"Could you open the window please?"*

b) "Give me the Wi-Fi password."

*"Could you give me the Wi-Fi password?"*

c) "Where is the ATM?"

*"Could you tell me where the ATM is?"*

d) "I want you to send me an email with the information."

*"Could you send me an email with the information?"*

e) "What is your last name?"

*"Could you tell me your last name?"*

f) "I want to take a break now."

*"Could I take a break now?"*

g) "Help me with my homework."

*"Could you help me with my homework?"*

h) "Where can I buy a ticket?"

*"Could you tell me where I can buy a ticket?"*



6. Pairwork: imagine you are at home. Your partner will ask you for directions to some location near your home. Give them directions (from the location of your home).

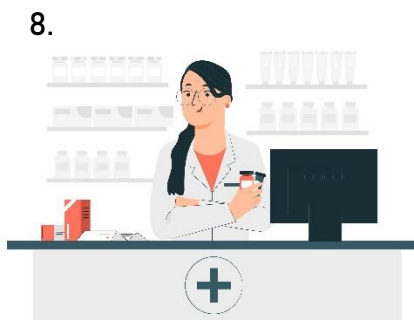
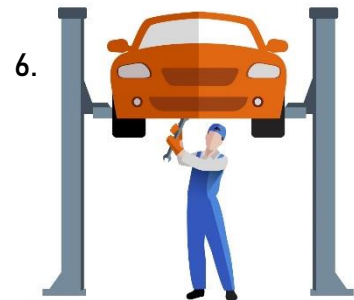
*“Excuse me, could you tell me where the nearest ..... is?”*

- restaurant
- café
- bank
- shopping centre
- park



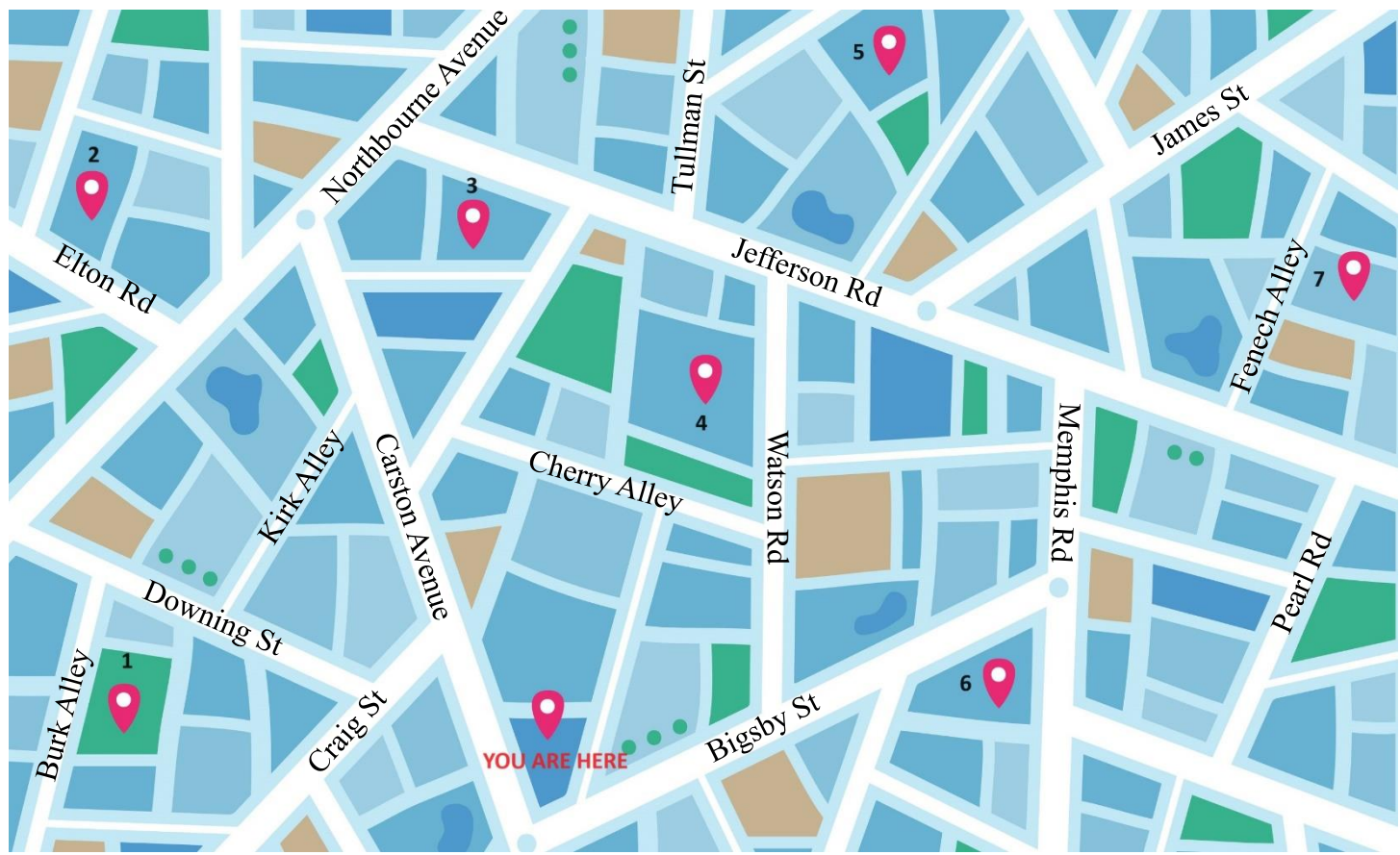
7. Match the words in the box with the locations below.

bar <b>4</b>	petrol station <b>1</b>	pharmacy <b>8</b>
ATM <b>2</b>	bus stop <b>7</b>	hairdresser <b>3</b>
mechanic <b>6</b>	mall <b>9</b>	parking lot <b>5</b>





8. Look at the map and give your partner directions to one of the numbered locations (do not tell them which number). Your partner will listen and tell you what number you chose.



9. You are going to listen to a GPS giving directions to the locations on the map from exercise 7. Listen to the GPS and write down which number is which location.

"To get to the *nearest park*, drive up Carston Avenue and turn left at Craig Street. Then *take the first right* at Downing Street. Then turn left on Burk Alley. The park will be *on your left*."

- 1. *eg. park* .....
- 2. *Petrol station*
- 3. *Hairdresser*
- 4. *Parking lot*
- 5. *Bar*
- 6. *ATM*
- 7. *Mechanic*



### Audio Transcript

*To get to the nearest park, drive up Carston avenue and turn left at Craig street. Then take the first right at Downing street. Then turn left on Burk alley. The park will be on your left.*

*To get to the nearest ATM go straight up Bigsby street and turn right on Memphis road. The ATM will be on your right.*

*To get to the nearest petrol station, drive up Carston Avenue and turn left at the end. Then take the second right, and the petrol station will be on your right.*

*To get to the nearest parking lot, drive up Bigsby street and turn left on Watson road. Drive past Cherry Alley and the parking lot will be on your left.*

*To get to the nearest mechanic, go straight up Bigsby street and take the second left. Then turn right and take the second left. The mechanic will be on your right.*

*To get to the nearest bar, drive up Carston avenue and take the first right. Then turn right on Jefferson road and take the first left, and then take the first right. The bar will be on your right.*

*To get to the nearest hairdresser, drive up Carston avenue and right at the end. Turn right on Jefferson road, the hairdresser will be on your right.*